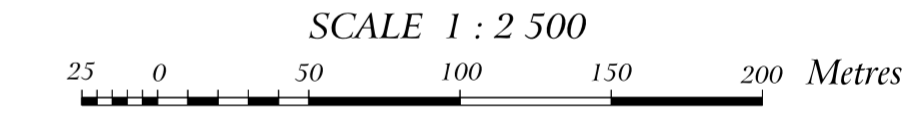
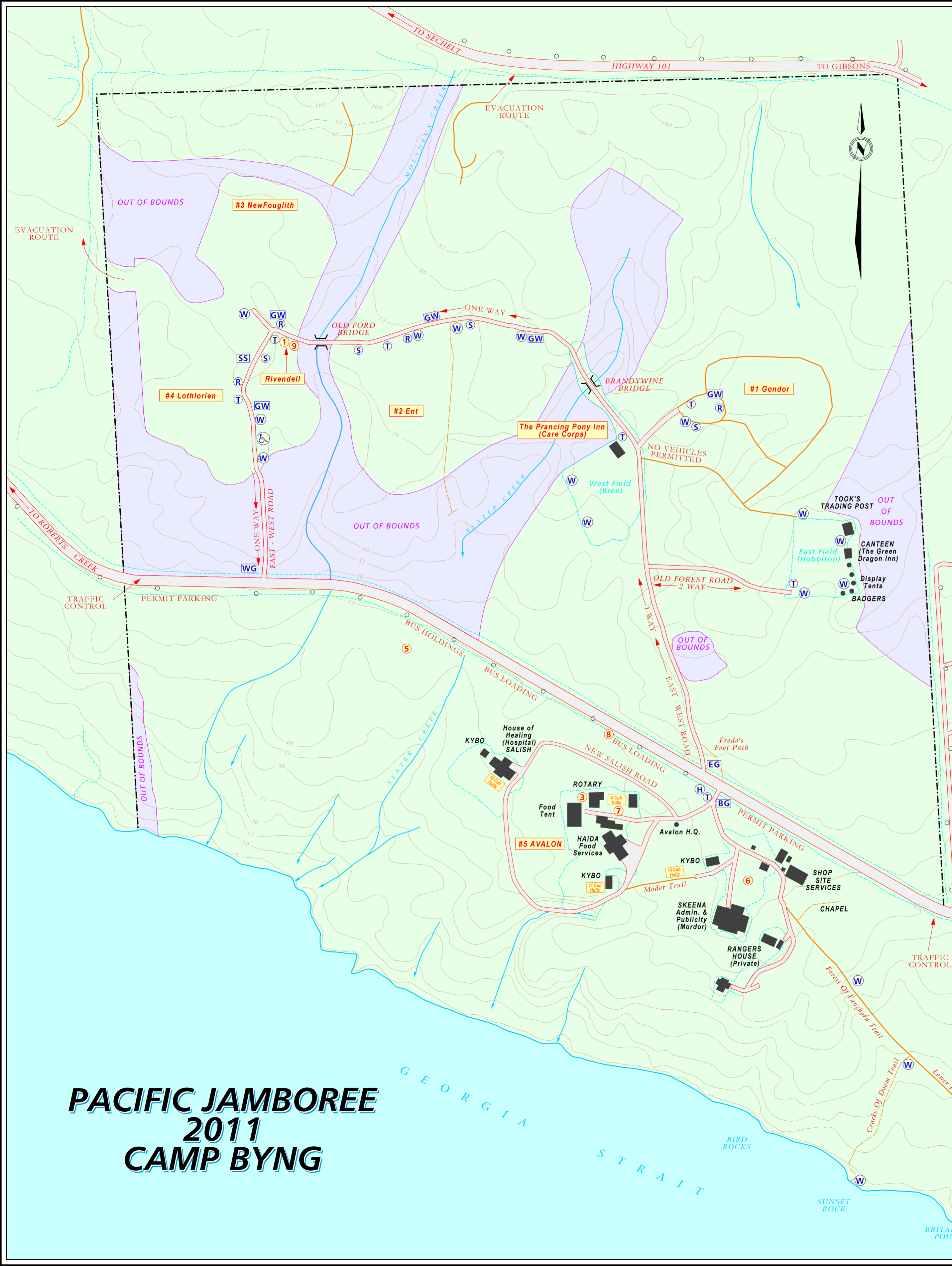


# PACIFIC JAMBOREE 2011 - LEGEND

| GENERAL AND MISCELLANEOUS      |   | WHERE CAN I FIND IT?            |   |
|--------------------------------|---|---------------------------------|---|
| [BG]                           | Camp Byng Gateway   | Administration                  | Skeena Lodge (Mordor)                     |
| [H]                            | Fire Hydrant  | Badge trading                   | East Field (Hobbiton)                     |
| [GW]                           | Subcamp grey water disposal tank  | Bank                            | East Field (Hobbiton)                     |
| [EG]                           | East Gate   | Byng sign                       | Lower Field ocean front (Plains Of Rohan) |
| [P]                            | Pay telephone   | Camp Byng Gateway               | BG  |
| [R]                            | Subcamp unit ration pickup (ration container exchange)  | Camp Chief                      | Skeena Lodge (Mordor)                     |
| [S]                            | Subcamp showers   | Canteen                         | East Field (Hobbiton)                     |
| [SS]                           | Sore Spots (Medical Services)   | Closing ceremonies              | West Field (Bree)                         |
| [T]                            | Toilets   | Communications                  | Skeena Lodge (Mordor)                     |
| [W]                            | Water Taps  | Displays                        | East Field (Hobbiton)                     |
| [WG]                           | West Gate   | Emergency Services HQ           | Rotary Lodge                              |
| [1]                            | Subcamp coordination (Discovery Passage)  | Fire hydrant                    | H   |
| [2]                            | Subcamp headquarters - Rivendell  | First Aid                       | SS  |
| [3]                            | Staff feeding, Scouter & Venturer Drop-in   | Food services for staff         | Haida Lodge                               |
| [4]                            | On-site Program   | Freight drop-off/reload         | West Field (Bree)                         |
|                                |   | Grey water disposal             | GW  |
| FIELDS AND PROGRAM             |   | Hospital (House Of Healing)     | Salish Lodge                              |
| West Field (Bree)              | Arrivals/departures gear freight pickup/loadout, PJ Opening / Closing, Subcamp Nights, Stage, Prancing Pony Inn (Care Corps)      | Indaba                          | West Field (Bree)                         |
| East Field (Hobbiton)          | On-site Program - Bank, Badge trading, Canteen Displays, Pay telephones, Post Office, Tandy Leather, Trading Post                 | Indaba registration             | 9   |
| Lower Forest Of Fanghorn Trail | On-site Program   | Media Services                  | Skeena Lodge (Mordor)                     |
| Lower Field (Plains Of Rohan)  | On-site Program - Camp Byng sign  | Newspaper                       | Skeena Lodge (Mordor)                     |
|                                |   | East Gate                       | EG  |
|                                |   | Ocean                           | Lower field waterfront (Plains Of Rohan)  |
| [5]                            | On-site Program   | Opening ceremonies              | West Field (Bree)                         |
| [6]                            | Program Headquarters  | Post Office                     | East Field (Hobbiton)                     |
| [7]                            | Off-site Program - Descend Mt. Doom Bike Barn   | Program bus loading             | 8   |
| [8]                            | Off-site Program - Descend Mt. Doom Bike Barn   | Program Changes                 | 9   |
| [9]                            | Program Change & Indaba Sign-up   | Program Headquarters            | 6   |
|                                |   | Public relations                | Skeena Lodge (Mordor)                     |
|                                |   | Quartermaster on-site desk      | Shop                                      |
| LODGES                         |   | Rations pickup                  | R   |
| Haida & Rotary                 | Offer-Of-Service food services  | Rations container return        | R   |
| Salish                         | Medical services (House Of Healing)   | Scouter drop-in (evenings only) | 3   |
| Skeena (Mordor)                | Administration, Camp Chief, Communications, Emergency services HQ, Media services, PJ Newspaper, Public Relations, Transportation | Site Services                   | Shop                                      |
| Skeena Field (Mordor)          | Program   | Sore Spot                       | SS  |
| Shop                           | On-site QM desk, Site Services  | Subcamp coordination            | 1   |
|                                |   | Subcamp showers                 | S   |
|                                |   | Staff feeding (OOS only)        | 3   |
|                                |   | Tandy Leather                   | East Field (Hobbiton)                     |
|                                |   | Toilets                         | T   |
|                                |   | Trading Post                    | East Field (Hobbiton)                     |
|                                |   | Transportation                  | Skeena Lodge (Mordor)                     |
|                                |   | Water taps                      | W   |
|                                |   | West gate                       | WG  |
|                                |   | Prancing Pony Inn (Care Corps)  | West Field (Bree)                         |



**McElhanney** GEOMATICS  
 PROFESSIONAL LAND SURVEYORS  
 8808 - 72nd STREET  
 FORT ST. JOHN, B.C. V1J 6M2  
 PHONE (250) 787-0356  
 FAX (250) 787-0310  
 © COPYRIGHT McELHANNEY GEOMATICS 2010. FILENAME: JOBS/BOYSCOUTS/JAMBOREE2011.DGN



# PACIFIC JAMBOREE 2011 CAMP BYNG

GEORGIA STRAIT  
 BIRD ROCKS  
 SUNSET ROCK  
 BRITANNIA POINT